



INSTRUCTION BULLETIN

No. 340333
Machine: ATLV 4300
Published: 11-01/01
System: SWEEPING

NOTE: DO NOT DISCARD the Parts List from the Instruction Bulletin. Place the Parts List in the appropriate place in your machine manual for future reference. Retaining the Parts List will make it easier to reorder individual parts and will save you the cost of ordering an entire kit.

NOTE: Numbers in parenthesis () are reference numbers for parts listed in Bill of Materials.

Installation instructions for kit number 368401

SYNOPSIS / PROBLEM: OVER TIME, THE WEIGHT OF THE HOPPER FILTER BOX MAY ALTER THE SHAPE OF THE HOPPER AND HOPPER SEALS. INSTALLATION OF THIS KIT WILL HELP REINFORCE THE SIDES OF THE HOPPER AND THE HOPPER SEALS.

This kit contains the parts needed to install a hopper seal kit on the model 4300 sweeper. Please follow step-by-step instructions.

SPECIAL TOOLS / CONSIDERATIONS: HAND DRILL, 5/16 IN. (7.93 MM) & 3/16 IN. (4.76 MM) DRILL BITS.

(Estimated time to complete: 1 hour)

PREPARATION:

(Refer to FIG. 1 thru 5)

FOR SAFETY: Before leaving or servicing machine, stop on level surface and set parking brake. Then turn off machine and remove key.

STIFFENER STRIP INSTALLATION:

(Refer to FIG. 1 thru 5)

1. Disconnect the filter inlet duct from the filter housing. Roll the filter inlet duct up under the canister handle.
2. Open debris canister. Remove all trash bags and/or liners from the debris canister.
3. Center one of the longer, rear stiffener strips (1) tight up under the hopper lip seal on the back side of the hopper. (Refer to FIG. 1 and 4)
4. Shape the strip if necessary, to conform to or straighten a bow in the back side of the hopper.
5. Using the rear stiffener strip (1) as a template, mark and drill five 3/16 (4.76 mm) rivet holes. (Refer to FIG. 1 and 4)

NOTE: Rivet the rear stiffener strip (1) on from the inside of the canister.

6. Mount the rear stiffener strip (1) to the canister with five rivets (3). (Refer to FIG. 1 and 4)
7. Mount the second rear stiffener strip (1) to the front side of the canister in the same fashion as the first one. (Refer to FIG. 1 and 4)
8. Center one of the shorter, side stiffener strips (2) tight up under the hopper lip seal on the right side of the hopper. (Refer to FIG. 2 and 4)

9. Shape the strip if necessary, to conform to or straighten a bow in the side of the hopper.
10. Using the side stiffener strip (2) as a template, mark and drill four 3/16 (4.76 mm) rivet holes. (Refer to FIG. 2 and 4)

NOTE: Rivet the side stiffener strip (1) on from the inside of the canister.

11. Mount the side stiffener strip (2) to the canister with 4 rivets (3). (Refer to FIG. 2 and 4)
12. Mount the second side stiffener strip (2) to the left side of the canister with pop rivets (3) in the same fashion as the first one. (Refer to FIG. 2 and 4)

SUPPORT BRACKET INSTALLATION (FOR MACHINES EQUIPPED WITH A DUST PANEL FILTER OPTION):

(Refer to FIG. 3 and 5)

13. Open the filter housing, and remove the filter while installing the support brackets.
14. Position the left side support bracket (5) on the left rear corner of the debris canister, just above the upper rib on the debris canister. Check that the support bracket (5) is in the same position as the support bracket shown in figures 3 and 5, parallel with the rib on the debris canister. (Refer to FIG. 3 and 5)
15. Using the support bracket (5) as a template, mark and drill two 5/16 holes in the debris hopper and one 5/16 hole in the filter housing weldment. (Refer to FIG. 3 and 5)
16. Loosely mount the support bracket (5) to the filter housing with a hex screw (7), washer (8), and a lock nut (9). (Refer to FIG. 3 and 5)
17. Loosely mount the support bracket (5) to the debris hopper with a backing strip (6) and lock nuts (9). Tighten all mounting hardware. (Refer to FIG. 3 and 5)
18. Mount the right side support bracket to the right side of the canister in the same fashion, opposite the left one. (Refer to FIG. 3 and 5)

BILL OF MATERIALS FOR HOPPER SEAL KIT 368401

Ref.	TENNANT Part No.	Description	Qty.
1	368399	Strip, stiffener, rear	2
2	368400	Strip, stiffener, side	2
3	368404	Rivet, pop, .187 dia.	18
4	368408	Bracket, support, rh	1
5	368409	Bracket, support, lh	1
6	09010	Screw, hex, M08 X 1.25 X 25, Ss	2
7	01685	Washer, flat, 0.31 SS	2
8	08713	Nut, hex, lock, M08-1.25, NL, Ss	2

TENNANT COMPANY
P. O. Box 1452
Minneapolis, MN 55440-1452

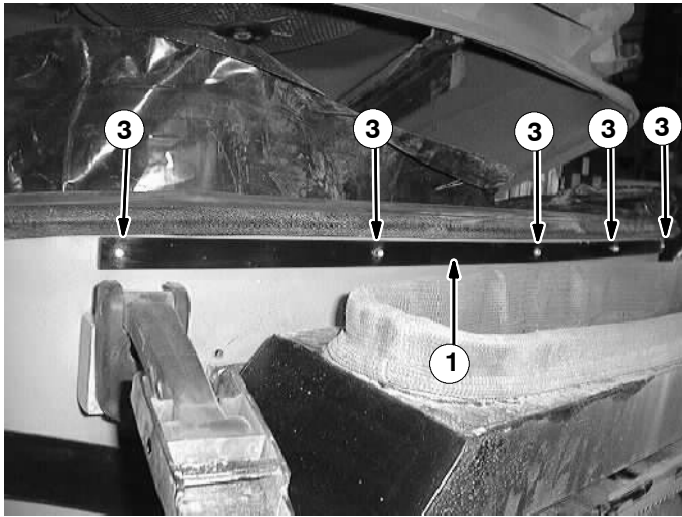


Fig. 1 - Rear stiffener strip installation

Mount the rear stiffener strips to the front and rear of the canister with pop rivets.

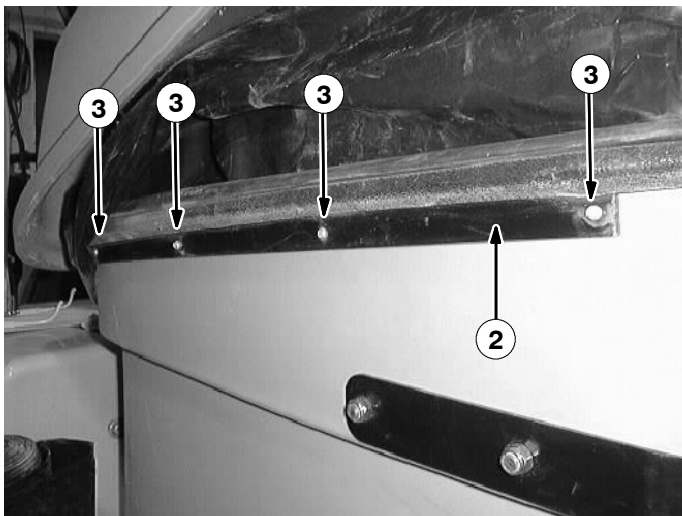


Fig. 2 - Side stiffener strip installation

Mount the side stiffener strips to both sides of the canister with pop rivets.

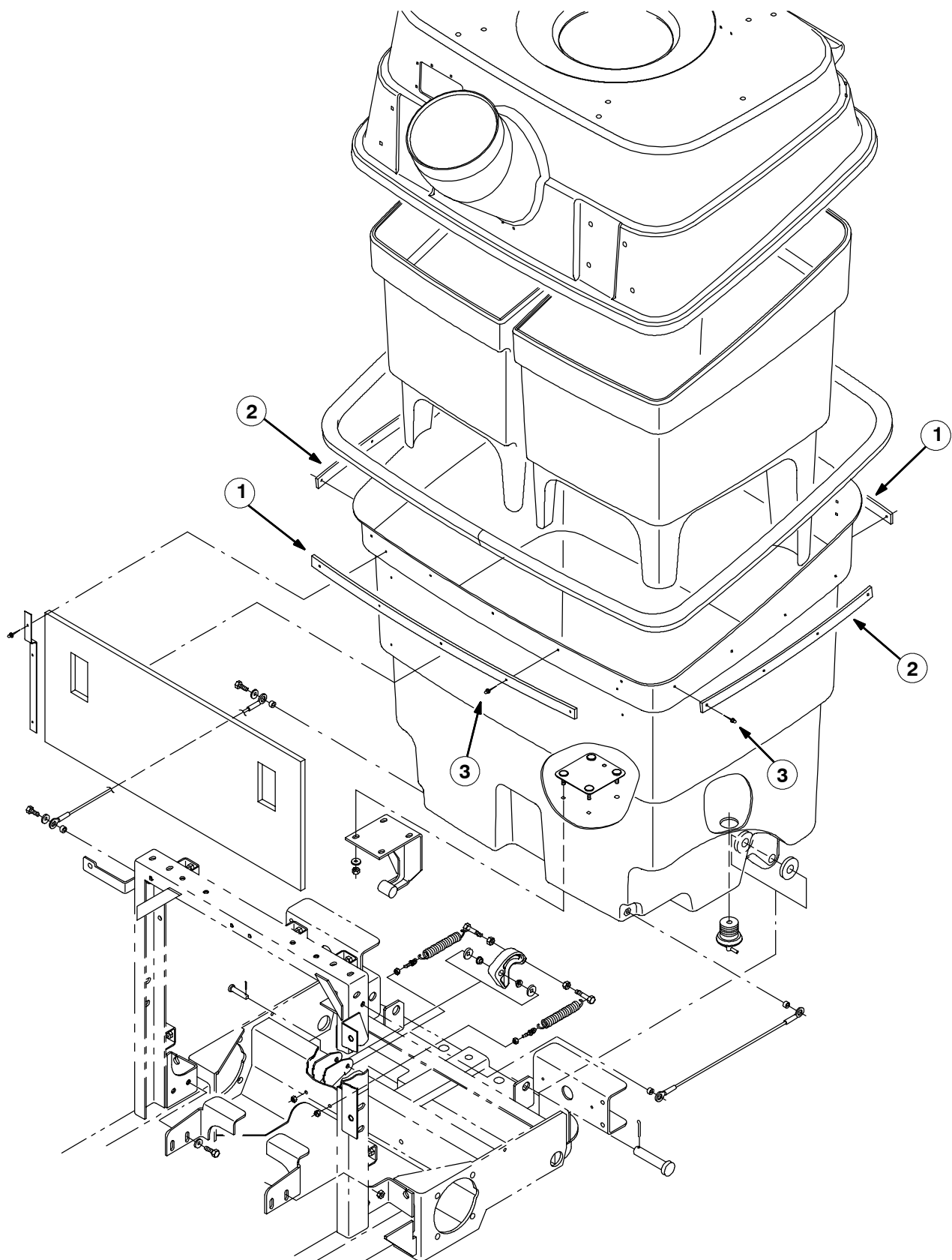


FIG. 1 - STIFFENER STRIP INSTALLATION